

Distributed By:

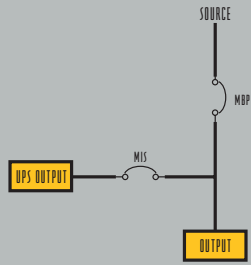
42 Princes Highway St Peters NSW 2044

Ph: +61 2 8068 8141 :: sales@overip.com.au :: www.overip.com.au

GLOBAL MAINTENANCE BYPASS CABINETS WITH DISTRIBUTION OPTIONS

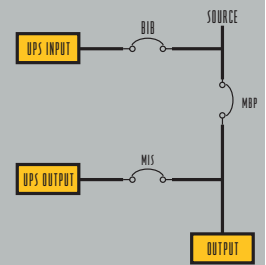
GMB 2 STANDARD FEATURES

- Two (2) breaker design consists of a MBP and MIS breaker
- Breakers are molded case, 600V rated, 35kAIC at 480V, fixed mount
- An auxiliary is mounted in the MBP for communication to the UPS
- Available configurations are 150, 250, 400, 600, and 800 amp
- Standard output power terminal block, two (2) 350MCM cables per phase
- Fix mounted to Wall or UPS



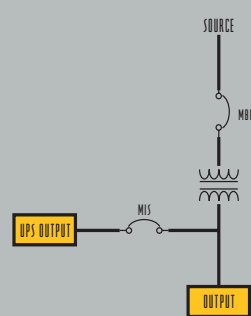
GMB 3 STANDARD FEATURES

- Three (3) breaker design consists of a MBP, MIS and BIB breaker
- Breakers are molded case, 600V rated, 35kAIC at 480V, fixed mount
- An auxiliary is mounted in the MBP for communication to the UPS
- Available configurations are 150, 250, 400, 600, and 800 amp
- Standard output power terminal block, two (2) 350MCM cables per phase
- Fix mounted to Wall or UPS



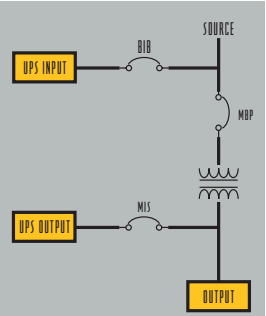
GMB 208-2 STANDARD FEATURES

- Two (2) breaker design consists of a MBP and MIS breaker
- Breakers are molded case, 600V rated, 35kAIC at 480V, fixed mount
- An auxiliary is mounted in the MBP for communication to the UPS
- Available configurations are 50, 75, 100, 150, 225 and 300kva
- Standard output power terminal block, two (2) 350MCM cables per phase
- Mounting: stand alone (PDU enclosure)
- Transformers: K20, Isolation, double shielded, 150°C Rise, 0° phase shift, Class R insulation, 6 compensation taps, 98% efficiency typical, 480v-208/120v, copper wound construction



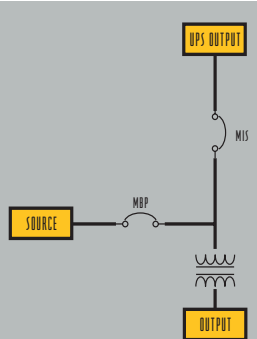
GMB 208-3 STANDARD FEATURES

- Three (3) breaker design consists of a MBP, BIB and MIS breaker
- Breakers are molded case, 600V rated, 35kAIC at 480V, fixed mount
- An auxiliary is mounted in the MBP for communication to the UPS
- Available configurations are 50, 75, 100, 150, 225, and 300kva
- Standard output power terminal block, two (2) 350MCM cables per phase
- Mounting: Stand alone (PDU enclosure)
- Transformers: K20, Isolation, double shielded, 150°C Rise, 0° phase shift, Class R insulation, 6 compensation taps, 98% efficiency typical, 480v-208/120v, copper wound construction



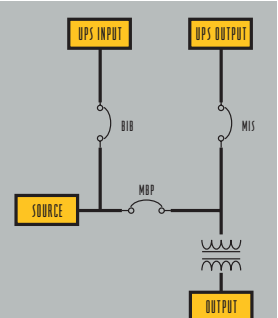
GMB 480-2 STANDARD FEATURES

- Two (2) breaker design consists of a MBP and MIS breaker
- Breakers are molded case, 600V rated, 35kAIC at 480V, fixed mount
- An auxiliary is mounted in the MBP for communication to the UPS
- Available configurations are 50, 75, 100, 150, 225, and 300kva
- Standard output power terminal block, two (2) 350MCM cables per phase
- Mounting: Stand alone (PDU enclosure)
- Transformers: K20, Isolation, double shielded, 150°C Rise, 30° phase shift lagging, Class R insulation, 6 compensation taps, 98% efficiency typical, 480v-208/120v, copper wound construction



GMB 480-3 STANDARD FEATURES

- Three (3) breaker design consists of a MBP, BIB and MIS breaker
- Breakers are molded case, 600V rated, 35kAIC at 480V, fixed mount
- An auxiliary is mounted in the MBP for communication to the UPS
- Available configurations are 50, 75, 100, 150, 225, and 300kva
- Standard output power terminal block, two (2) 350MCM cables per phase
- Mounting: Stand alone (PDU enclosure)
- Transformers: K20, Isolation, double shielded, 150°C Rise, 30° phase shift lagging, Class R insulation, 6 compensation taps, 98% efficiency typical, 480v-208/120v, copper wound construction



smiths interconnect

Power Distribution, Inc. | 4200 Oakleys Court | Richmond, VA 23223
800.225.4838 | 804.737.1703 fax | web site: www.pdicorp.com

©PDI 06/12